

Clonazepam

Xanax is a benzodiazepine alprazolam-based anxiolytic. Counterfeit Xanax may contain caffeine as a main component, as well as clonazepam and flualprazolam, both of which have a strong sedative effect, are able to cause amnesia, and belong to the group of new psychoactive drugs.

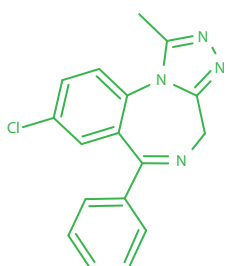
Substance

Alprazolam, CAS Number 28981-97-7

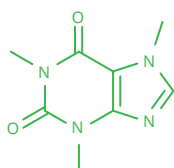
Caffeine, CAS Number 58-08-2

Clonazepam, CAS Number 33887-02-4

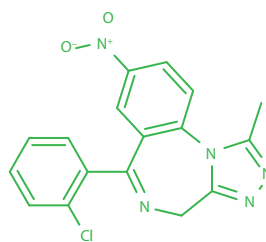
Flualprazolam, CAS Number 28910-91-0



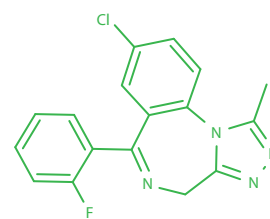
Alprazolam



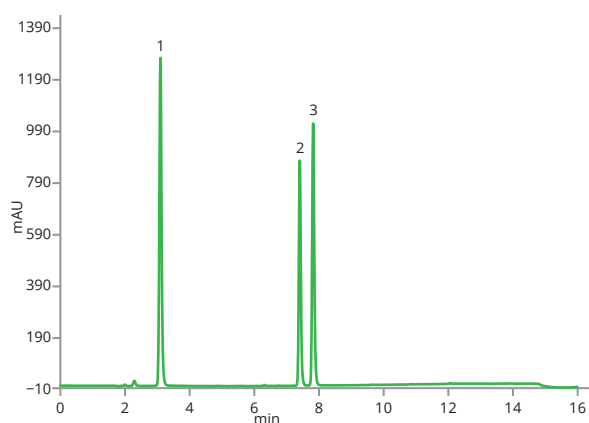
Caffeine



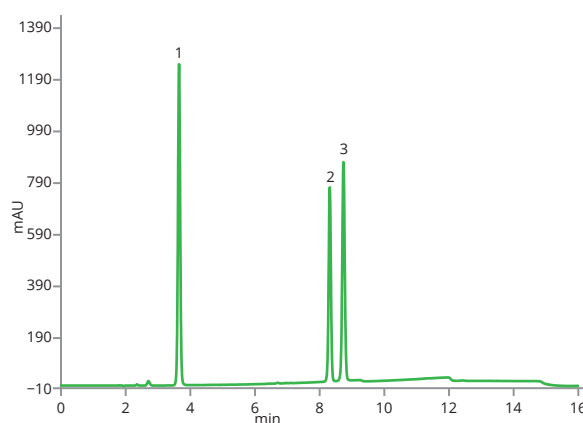
Clonazepam



Flualprazolam



Sample on ASTRA® C18-HE HPLC column



Sample on ASTRA® DM HPLC column



Clonazepam

Column	ASTRA® C18-HE, 5 µm, ASTRA® DM, 5 µm			
Dimensions	150 mm × 4.6 mm (for both columns)			
Part number	AST-5732-LK46, AST-5810-LK46			
Mobile phase	A: H ₂ O / 0.1% HCOOH + 2 mM HCOONH ₄ B: CH ₃ CN / 0.1% HCOOH			
Gradient elution	Time	A (%)	B (%)	Flow rate (ml/min)
	0	80	20	1.0
	2	80	20	1.0
	8	20	80	1.0
	11.5	20	80	1.0
	12	80	20	1.0
	15	80	20	1.0
Flow rate	1 ml/min			
Temperature	20 °C			
Injection volume	10 µl			
Detection	UV @254 nm			
Analytes	1. Caffeine 2. Clonazepam 3. Flualprazolam			



UNIVERSITY OF
CHEMISTRY AND TECHNOLOGY
PRAGUE

Developed in co-operation with Technical university in Prague.

www.arionchromatography.com

ASTRA® is a trademark registered by Chromservis s.r.o. Other trademarks and trade names may be used in this document to refer to either the entities claiming the marks and/or names or their products and are the property of their respective owners. We disclaim proprietary interest in the marks and names of others.