

Amines

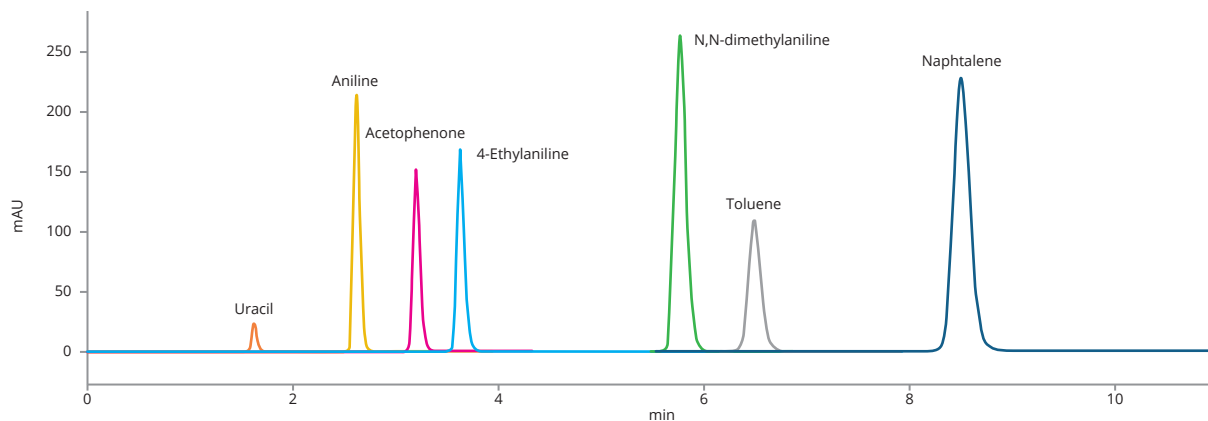
This application shows very nice peak symmetry and separation of aromatic amines in a Engelhardt mixture.

Substance

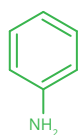
Aniline, CAS Number 62-53-3

4-Ethylaniline, CAS Number 589-16-2

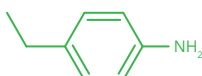
N,N-dimethylaniline, CAS Number 121-69-7



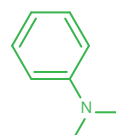
Standard mixture on Astra® C18-BDS



Aniline



4-Ethylaniline



N,N-dimethylaniline



Amines

Column	ASTRA® C18-BDS, 5 µm
Dimensions	150 mm × 4.6 mm
Part number	AST-5875-LK46
Mobile phase	Water:ACN (45:55) Isocratic elution
Flow rate	1 mL/min
Temperature	25 °C
Detection	UV @254 nm
Injection volume	1 µL
Analytes	1. Uracil 2. Aniline 3. Acetophenone 4. 4-Ethylaniline 5. N,N-dimethylaniline 6. Toluene 7. Naphtalene