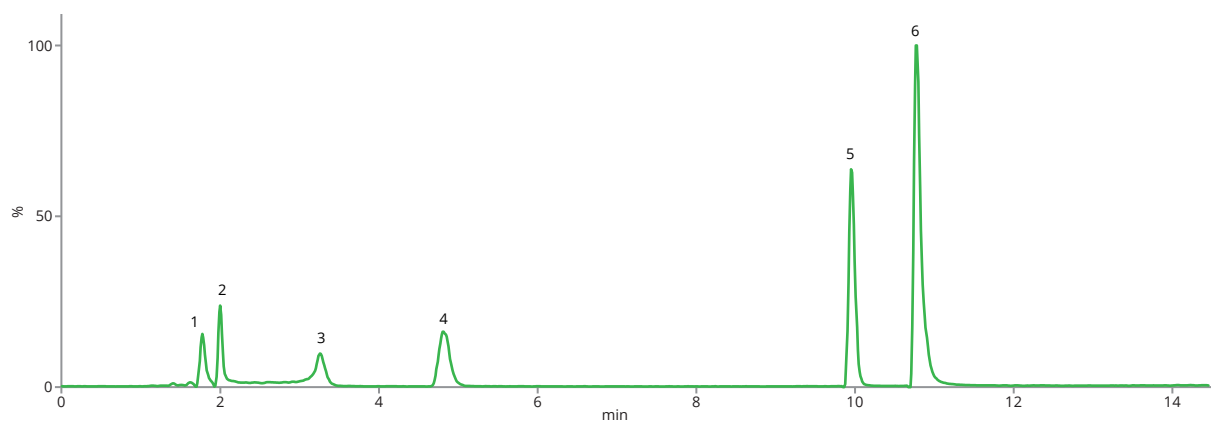




Food supplements

Food supplements are now trending worldwide. Concentrated sources of nutrients, vitamins and aminoacids are used to support the normal nutritional balance and healthy lifestyle. This application shows the simultaneous determination of cAMP, phenylalanine, tryptophan, FAD, malic and citric acids by accurate HPLC method.



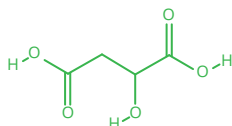
Analysis of standard solution on ARION® column



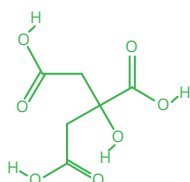
Food supplements

Column	ARION® Polar C18, 5.0 µm		
Dimensions	250 mm × 4.6 mm		
Part number	ARI-5721-LM46		
Mobile phase	A: ACN B: 5 mM formic acid		
Gradient elution	Time (min)	%A	%B
	0	5	95
	5	5	95
	12	35	65
	17	70	30
Flow rate	0.25 mL/min		
Temperature	30 °C		
Detection	TOF MS		
Injection volume	3 µL		
Analytes	1. Malic acid, CAS No. 6915-15-7 2. Citric acid, CAS No. 77-92-9 3. cAMP, CAS No. 60-92-4 4. L-phenylalanine, CAS No. 63-91-2 5. L-tryptophan, CAS No. 73-22-3 6. Flavin adenine dinucleotide, CAS No. 146-14-5		

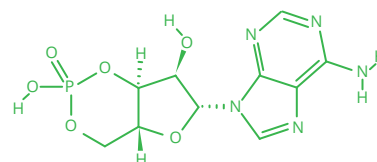
Food supplements



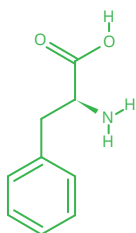
Malic acid



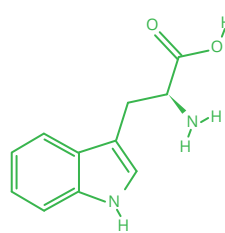
Citric acid



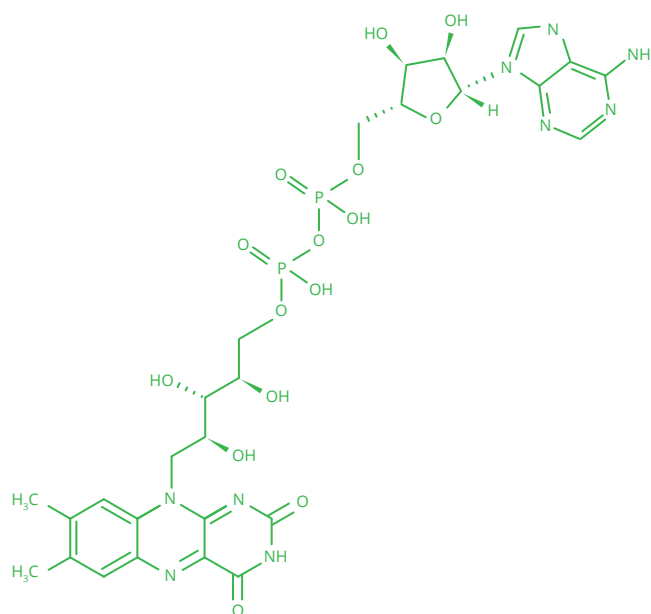
cAMP



L-phenylalanine



L-tryptophan



Flavin adenine dinucleotide